

be

baumschlager eberle
architekten



HAUS HOLDERGASSE PHOTO OX 004

Press information

Haus Holdergasse

Vaduz, Liechtenstein



Project description 1|2



HAUS HOLDERGASSE PHOTO OX 238

A poetic balance of privacy and openness

A response to the local surroundings, the incorporation of a mature beech tree and a balance between privacy and openness, all combining to make a strong case for sustainable building: such was the brief for a new detached family home in Vaduz, Liechtenstein. Baumschlager Eberle Architekten succeeded in meeting all the client's wishes sustainably with a genuinely custom-built house.

"The desire for sheltered exterior spaces was a key factor in the conception of this very sculptural structure. It allowed us to create a number of very different private spaces," explains Ulli Grassmann, managing partner at Baumschlager Eberle Architekten.

Positioned on the plot with pinpoint accuracy, the design follows its topography with a three-storey structure and a gross floor area of 346m², offering a nuanced counterpoint of privacy and exterior views. The site lends itself naturally to the L-shaped layout which, together with the beech tree, forms a sort of interior courtyard. With its carefully planned recesses and cut-ins, the building has a strongly sculptural form. Selected materials, high-quality craftsmanship and a high-efficiency energy concept add to the house's environmental

The project

The building is more than just a structure placed on a garden site. It relates to its surroundings in various ways, including through its relationship with the mature beech tree that forms a central element of the design. The house also has a clear street side with a covered entrance and two sheltered terraces.

Project description 2|2

In the words of Ulli Grassmann, "The sculptural form of the building is the result of the interplay between the structure itself and its openings and outdoor spaces. The top floor on the street side, for example, appears to float above the first-storey terrace, discreetly supported by a trapezoidal wooden beam. The ground floor features a sheltered entry area, while the visually asymmetrical yet functionally logical arrangement of the windows breaks with the conventions of classic villa architecture."

Leaving aside its form, the house is characterised primarily by the use of three materials – oak, untreated concrete and a series of light-coloured renders – together with a spatial and material quality that is underscored by high quality craftsmanship. Outside, the combination of rendered block walls and oak window frames reinforces the abstract, sculptural quality of the architecture.

The monolithic masonry, natural/untreated building materials, lime render and minimal use of insulating materials add to the house's environmental credentials. The durability and so the sustainability of these materials stand at the very heart of a design process in which the thickness of the concrete slabs was minimised to save resources and simple clay insulating blocks reduce energy losses to a minimum. Together with the concrete slabs, these blocks create a high thermal mass that stores solar energy gains and guarantees pleasant indoor temperatures even in the summer.

With its environmental and aesthetic quality standards, the building, which was completed in 2020, bridges the gap between traditional building techniques and contemporary innovative architecture, in every respect a subtle reinterpretation of classic villa architecture.

Facts and figures



HAUS HOLDERGASSE PHOTO OX 002



HAUS HOLDERGASSE PHOTO OX 001

Haus Holdergasse

Vaduz, Liechtenstein

Geometry, light and materials

The major challenge for Baumschlager Eberle Architekten's here was to allow full expression to the client's multiple expectations. The result: a sculptural form that grows out of the tension between structure, openings and outdoor spaces with sustainability firmly rooted in both choice of materials and design process.

Typology Single family housing

Client Private

Site Vaduz

Gross floor area 346 m²

Completion 2020

Photography by OLEX, Marc and Oliver Lins ox

Team Baumschlager Eberle Architekten

Competition/Order type Direct order

Award Schweizer Preis für Putz und Farbe

1st prize *category: façade*

3rd prize *category: interior space*

Press photos 1|2



HAUS HOLDERGASSE PHOTO OX 003

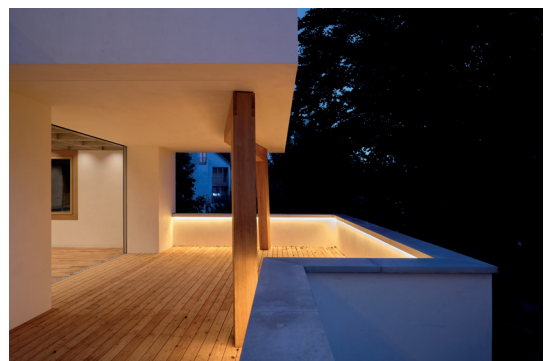
All photos in this press release are free of charge and available in various formats for print and online publications. Please get in touch with our press department to request the desired fine data. Contact details on the back.



HAUS HOLDERGASSE PHOTO OX 006



HAUS HOLDERGASSE PHOTO OX 032



HAUS HOLDERGASSE PHOTO OX 009

Press photos 2|2



HAUS HOLDERGASSE PHOTO OX 111



HAUS HOLDERGASSE PHOTO OX 104b



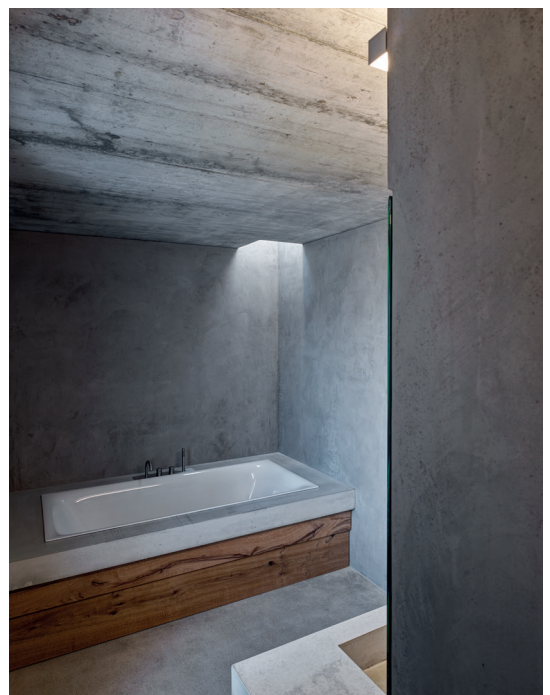
HAUS HOLDERGASSE PHOTO OX 108



HAUS HOLDERGASSE PHOTO OX 007

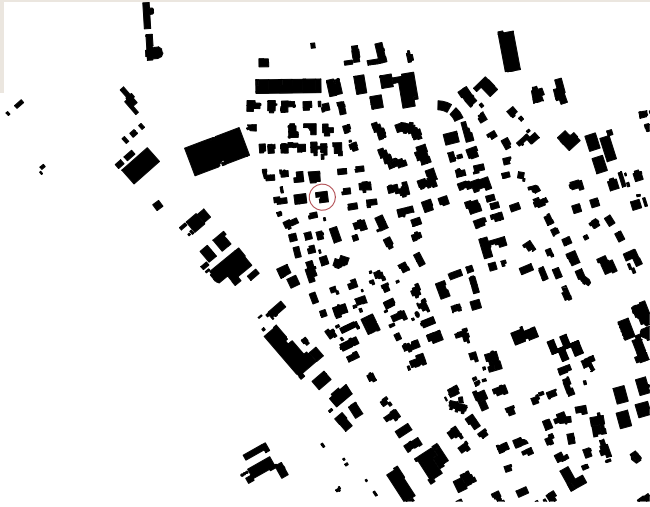


HAUS HOLDERGASSE PHOTO OX 101

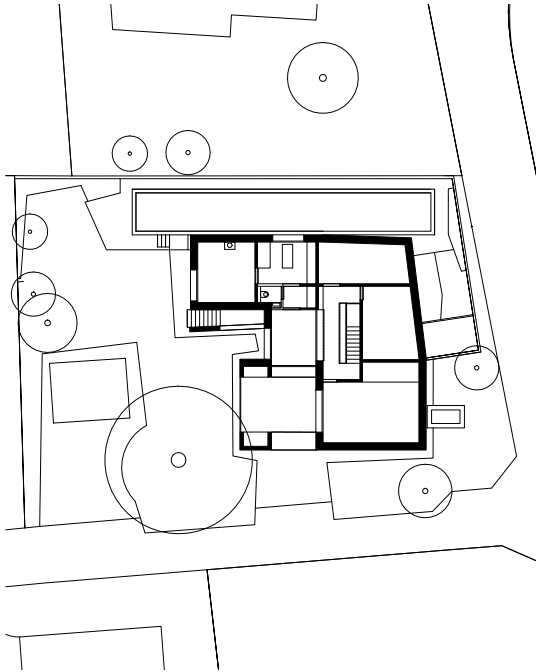


HAUS HOLDERGASSE PHOTO OX 109

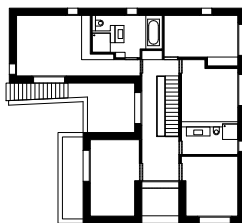
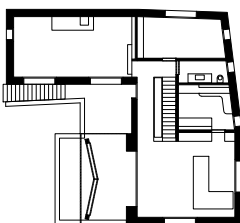
Publication plans



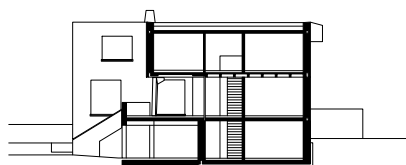
HAUS HOLDERGASSE **Black plan**



HAUS HOLDERGASSE **Site plan**



HAUS HOLDERGASSE **F Plan**



HAUS HOLDERGASSE **Cut**

Baumschlager Eberle Architekten



Profile

The practice

Baumschlager Eberle Architekten uses a clear, systematic approach to design and build landmark structures worldwide. Founded in Austria's Vorarlberg in 1985, with eleven offices in Europe and Asia, we are now a major architecture firm.

Portfolio

What we do

Alongside our main focus on residential and office developments, we also work in the fields of education and culture, health and sport, transport and traffic and are active in the wider planning environment, managing both interior and landscape design projects. Today we have completed some 400 projects in 20 countries spanning three continents.

Process

How we work

During the design and planning process we examine every aspect of a building project in all its complexity. This work forms the basis for clear and logical decision making, ensures quality throughout the construction process and guarantees transparency and trust.

Offices

Where we work

A local presence around the globe

We have a firm footing in both Europe and Asia with eleven offices located in a number of cities. Our presence on the ground broadens our understanding of local conditions and cultural specificities and helps us stay close to our clients.

Team

As international as our clients

We see ourselves as team players, a group of highly qualified professionals planning and implementing projects with character and passion. The team currently consists of around 250 staff members from 21 countries who communicate in 19 different languages.

Sustainability

Our contribution

Longevity is the major contribution a building can make in terms of ecology, economy and cultural value. With this in mind, we construct our buildings to meet a raft of sustainability criteria relating to resources and energy, quality and neutrality of use.

Press contacts



HAUS HOLDERGASSE PHOTO OX 236



HAUS HOLDERGASSE PHOTO OX 1036

Claudia Schwind

7, rue Debelleye | 75003 Paris France
+33 7 85 46 51 02
c.schwind@be-architects.fr
Languages DE | EN | FR | IT

Gert Walden

Praterstrasse 33/5 | 1020 Vienna Austria
+43 676 394 26 63
g.walden@be-wien.com
Languages DE | EN

Copyright Photographie

Photography by OLEX, Marc and Oliver Lins

© 2021 be architects holding AG



be

baumschlager eberle
architekten



www.baumschlager-eberle.com