



MAISON DES ETUDIANTS DE LA FRANCOPHONIE PHOTO CW 830

Press information

Maison des étudiants de la francophonie,
Cité Internationale Universitaire de Paris

 Paris, France

Project description 1|2



MAISON DES ETUDIANTS DE LA FRANCOPHONIE PHOTO CW 059

When comfort meets beauty

The new residence building by Baumschlager Eberle Architekten is located in a prominently occupied environment. The student city Cité internationale universitaire de Paris was founded as an international community after World War 1. It boasts buildings by the co-inventor of modernism Le Corbusier, the Dutch master of architectural proportions Willem Marinus Dudok and Claude Parent, the partner of the architectural philosopher Paul Virilio.

The Maison des étudiants de la francophonie sets out to offer its residents a spatial framework that makes comfort and beauty an essential part of their everyday experience. A challenge it rose to from day one thanks to its location within the wider urban context for Baumschlager Eberle Architekten (lead architect) and Sam Architectes (associated architects). Marking the transition from Paris's noisy Boulevard Périphérique to the quieter park-like atmosphere of the Rue du Professeur Hyacinthe Vincent, the site was chosen to offer its students maximum peace and quiet. The use of concrete with its insulating properties as the primary building material further mitigates acoustic inputs.

Inside, the building provides 7,670m² of usable space and an **interesting range of potential uses**. Alongside the 300 student rooms, each with its own kitchenette and bathroom, the ground floor is largely given over to communal living space and houses a multi-functional meeting/events room, a lounge and a communal kitchen as well as the manager's office. Community and the communal are high on the agenda at the Maison de la Francophonie, where the architects have imagined two open-plan **areas for social interaction** on each of the eight floors, creating living space with views of the surrounding area. The individual rooms are also designed to enable students to entertain on a small scale and to adapt to their daily routines. The exterior space is equally attractive. 75% of it is landscaped, while two terraces provide pleasant outdoor seating areas.

Project description 2|2

The building's high value-in-use is thus assured by an architecture that has the kind of beauty appreciated by all, whether consciously or unconsciously. **The aesthetic concept** is based on the elementary tools of the architect: geometry, light and materiality.

“This enabled us to develop a strong sculptural identity that rejects any notion of modishness. Suffused with subtle detail, the architecture echoes the raison d’être of the Maison des étudiants de la Francophonie itself and the Cité Internationale Universitaire in which it stands, helping shape a space for discussion and debate, for understanding among nations”, explains **architect and managing partner Anne Speicher** at Baumschlager Eberle Architekten Paris, in reference to the design intent behind the project.

Characterised by striking chamfered concrete elements and profiled cornices, the façades are the architectural vocabulary that expresses movement into the structure. This movement follows a basic horizontal and vertical rhythm dictated by the concrete elements, the cornices and the recesses on either side of the building. Seen as a whole, **the architectural composition of the building is subtle and stylish**, a quality that extends to the material characteristics of its timber frame.

Elementary architecture necessarily involves the **concept of sustainability** for the future. Compact and built to last, the structure alone delivers a reduction in energy consumption, requiring 25% less heating energy than a traditional RT2012 building. Added to this energy efficiency is the fact that the Maison des étudiants de la francophonie generates all of its hot water using heat pumps that extract the necessary calories from service water. Its NF Habitat HQE and Effinergie+ certificates underline the effectiveness of the systems in place.

But longevity – **architecture’s contribution** to global sustainability – is not just a question of the material and the physical; it is also very much a matter of socio-cultural acceptance.

“Our aim was to create a building the students would be able to identify with, a feeling of belonging that would be reinforced by a certain level of comfort in their everyday lives and the beauty of the architecture”, explains **Anne Speicher**, spelling out Baumschlager Eberle Architekten’s fundamental design approach.

Facts and figures



MAISON DES ETUDIANTS DE LA FRANCOPHONIE PHOTO LB 002

Maison des étudiants de la francophonie, Cité Internationale Universitaire de Paris

Paris, France

A welcoming place for students to live

The new student residence was to form part of a collection of remarkable buildings. Baumschlager Eberle Architekten designed a sculptural, stand-alone building with a rhythmical façade that adds a striking new silhouette to the campus, a landmark that can be seen from afar.



MAISON DES ETUDIANTS DE LA FRANCOPHONIE PHOTO LB 003

Typology Residential

Client CIUP - Cité Internationale Universitaire de Paris,
Demathieu Bard Immobilier

Site 21-24 rue du Professeur Hyacinthe Vincent
and 24-26 rue André Rivoire, Paris, France

Site area 7.545 m²

Area of building 2.523 m²

Gross floor area 7.369 m²

Cooperation sam Architectes, Paris, France

Completion 2020

Photographie Luc Boegly LB, Cyrille Weiner CW

Team Baumschlager Eberle Architekten, Paris, France

Requests for images

The images in this pack are available free of charge for use in reporting on the *Maison des étudiants de la francophonie, Cité Internationale Universitaire de Paris*. For high-resolution images for print or web, please get in touch with our press department. You will find the relevant details in the press contacts section at the end of this press information.

Press photos



MAISON DES ETUDIANTS DE LA FRANCOPHONIE PHOTO **CW 352**



MAISON DES ETUDIANTS DE LA FRANCOPHONIE PHOTO **LB 032**

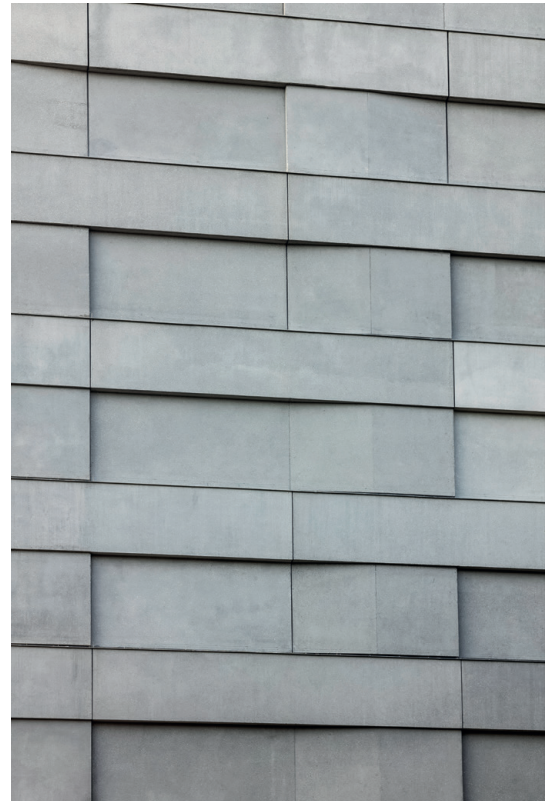


MAISON DES ETUDIANTS DE LA FRANCOPHONIE PHOTO **LB 056**

Press photos



MAISON DES ETUDIANTS DE LA FRANCOPHONIE PHOTO **CW 15**



MAISON DES ETUDIANTS DE LA FRANCOPHONIE PHOTO **CW 442**

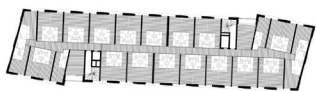


MAISON DES ETUDIANTS DE LA FRANCOPHONIE PHOTO **CW 033**

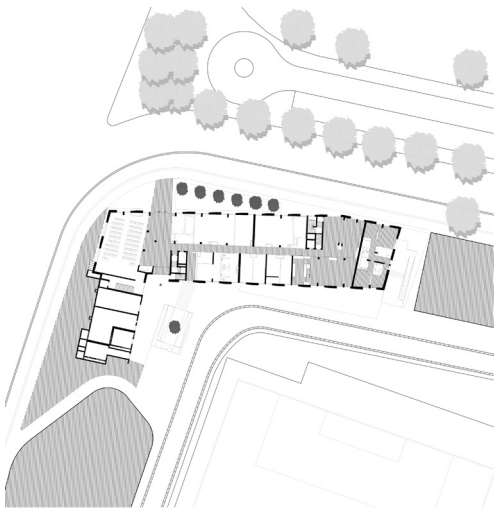
Publication plans



MAISON DES ETUDIANTS DE LA FRANCOPHONIE
Black plan



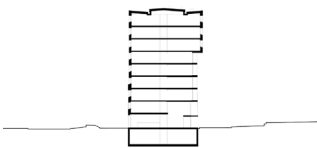
MAISON DES ETUDIANTS DE LA FRANCOPHONIE S
Floor plan



MAISON DES ETUDIANTS DE LA FRANCOPHONIE
Site plan



MAISON DES ETUDIANTS DE LA FRANCOPHONIE
Façade



MAISON DES ETUDIANTS DE LA FRANCOPHONIE
Section

Baumschlager Eberle Architekten



Profile

The practice

Baumschlager Eberle Architekten uses a clear, systematic approach to design and build landmark structures worldwide. Founded in Austria's Vorarlberg in 1985, with eleven offices in Europe and Asia, we are now a major architecture firm.

Portfolio

What we do

Alongside our main focus on residential and office developments, we also work in the fields of education and culture, health and sport, transport and traffic and are active in the wider planning environment, managing both interior and landscape design projects. Today we have completed some 500 projects in 20 countries spanning three continents.

Process

How we work

During the design and planning process we examine every aspect of a building project in all its complexity. This work forms the basis for clear and logical decision making, ensures quality throughout the construction process and guarantees transparency and trust.

Offices

Where we work

A local presence around the globe

We have a firm footing in both Europe and Asia with eleven offices located in a number of cities. Our presence on the ground broadens our understanding of local conditions and cultural specificities and helps us stay close to our clients.

Team

As international as our clients

We see ourselves as team players, a group of highly qualified professionals planning and implementing projects with character and passion. The team currently consists of around 270 staff members from 21 countries who communicate in 19 different languages.

Sustainability

Our contribution

Longevity is the major contribution a building can make in terms of ecology, economy and cultural value. With this in mind, we construct our buildings to meet a raft of sustainability criteria relating to resources and energy, quality and neutrality of use.

Press contacts



MAISON DES ETUDIANTS DE LA FRANCOPHONIE PHOTO CW 922

Claudia Schwind

7, rue Debelleyne | 75003 Paris France
+33 7 85 46 51 02
c.schwind@be-architects.fr
Languages DE | EN | FR | IT

Gert Walden

Praterstrasse 33/5 | 1020 Vienna Austria
+43 676 394 26 63
g.walden@be-wien.com
Languages DE | EN

Copyright photography

Luc Boegly LB, Cyrille Weiner CW

Copyright project

Baumschlager Eberle Architekten

Baumschlager Eberle Architekten

Baumschlager Eberle Architekten is a member of :be AG, a group whose parent company specialises in investments in architecture firms across Europe and Asia. Its 16 subsidiaries are highly professional architectural design practices with over 35 years' commercial experience. They work with clear processes to the highest architectural standards and are motivated by a strong creative and innovative drive. Operating under the Baumschlager Eberle Architekten name, they have carved out a place for themselves in the world of architecture through award-winning buildings that are both highly efficient and internationally renowned. :be AG's 2226 building concept gives the group a unique selling point in the sustainability sector.

© 2021 be architects holding AG



be
baumschlager eberle
architekten



www.baumschlager-eberle.com